

2021

**GEOGRAPHY — HONOURS — PRACTICAL****Paper : CC-3P****(Human Geography)****Full Marks : 30***The figures in the margin indicate full marks.**Candidates are required to give their answers in their own words  
as far as practicable.*

1. Compute arithmetic growth rate of population of the given districts for the decade 2001-2011 and represent them using suitable cartographic technique. 10

DISTRICTS	YEAR	
	2001	2011
Darjiling	16,09,172	18,46,823
Jalpaiguri	34,01,173	38,72,846
Cooch Behar	24,79,155	28,19,086
Uttar Dinajpur	24,41,794	30,07,134
Dakshin Dinajpur	15,03,178	16,76,276

Source : Census of India, 2011

2. Construct proportional divided circles to represent the religion-wise classification of population of selected countries (Table 2) and interpret the pattern. 13+2

Table 2 RELIGION-WISE CLASSIFICATION OF POPULATION (IN THOUSANDS)

Countries	Christians	Muslims	Hindus	Buddhists	Jews	Folk Religions	Unaffiliated	Others
USA	243,060	2,770	1,790	3,570	5,690	630	50,980	1,900
Germany	56,540	4,760	80	210	230	40	20,350	100
Pakistan	2,750	167,410	3,330	20	9	30	20	20

Source : World Population Review, 2021

3. Evaluation of Laboratory Notebook.

5

**2021**

**GEOGRAPHY — HONOURS — PRACTICAL**

**Paper : CC-4P**

**Full Marks : 30**

*The figures in the margin indicate full marks.*

1. (a) With a Dumpy Level, staff readings were taken at 3m intervals starting from station A where the RL was given as 5m. The readings were 1.370; 1.390; 1.385; 1.410; 1.445; 1.465; 1.415; 1.315; 1.255; 1.250; 1.245 and 1.260. The instrument was shifted once after the sixth reading. Prepare a field book with the given data, calculate the Reduced Levels of all stations and verify with Arithmetic Check. Plot the profile with a suitable scale. 5+5+1+4

*Or,*

- (b) A theodolite stationed at 'A' gave a vertical reading of  $12^{\circ}15'$  on left face and  $12^{\circ}13'$  on right face and when stationed at 'B' the vertical readings were  $23^{\circ}11'$  on left face and  $23^{\circ}15'$  on right face while observing the top of a tower XY. The reduced level at B is 10m. The height of the instrument at station A was 1.45m and at B was 1.40m. A and B stations are 12.5 m apart. Prepare a field book and compute the height of the tower XY as well as the distance of its base from both the stations. Stations A, B and the tower are on the same vertical plane. Also calculate the RL of the tower. 3+6+2+2+2

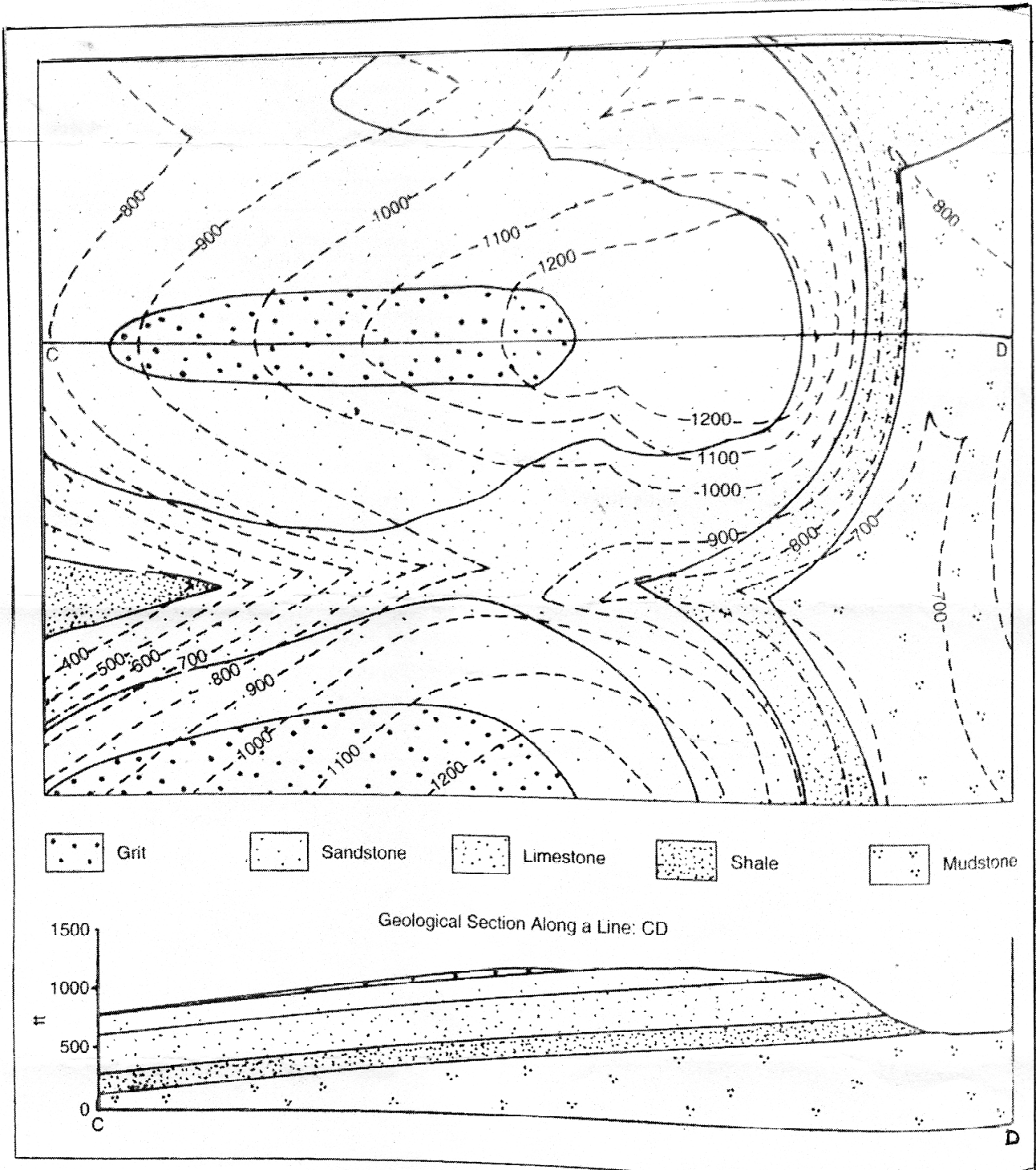
2. Interpret the given Geological map under the following heads : (Map No. 1)

- (a) Sequence of rock beds
- (b) Geological structure
- (c) Topography in relation to structure
- (d) Geological history. 2+2+3+3

3. Laboratory notebook. 5

**Please Turn Over**

2.



Geological Map No. I and Geological Section along CD